

# Wall-hung encased boilers with built-in storage - outdoor installation

## Libra Dual IN



DHW supply in 10 minutes	
LIBRA DUAL BTFS 24 IN	160 l/10 min.
LIBRA DUAL BTFS 28 IN	180 l/10 min.
LIBRA DUAL BTFS 32 IN	200 l/10 min.



Remote control  
(standard  
equipment)

### LIBRA DUAL BTFS 24 IN - BTFS 28 IN - BTFS 32 IN

**Wall-hung gas-fired encased boiler with built-in storage tank, sealed chamber and forced draught**

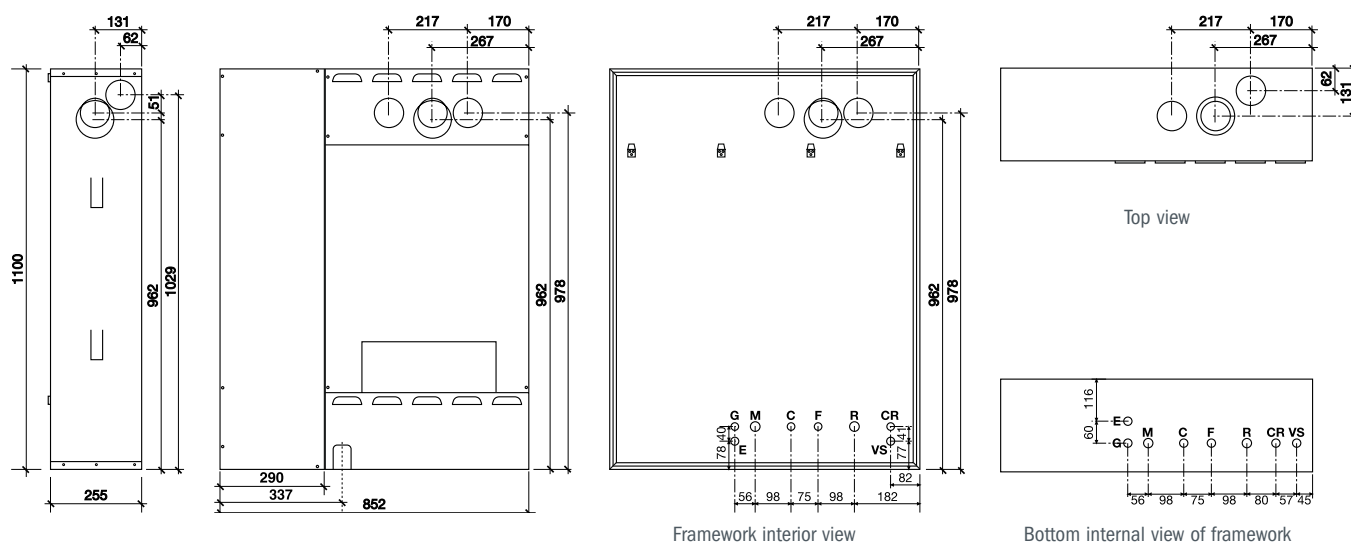
- The boiler is pre-set to run on natural gas or LPG.
  - CH and DHW continuous flame modulation.
  - Three-speed water pump.
  - "AQUA PREMIUM SYSTEM" DHW production, includes a plate heat exchanger and a 25 l stratification water tank which can be left inoperative when not needed.
  - Integrated hydraulic assembly including three-way valve, DHW plate heat exchanger, safety valve, water pressure switch, connection to expansion vessel, loading tap, disconnectable manual by-pass by-pass.
  - DHW flow switch.
  - 8 l expansion vessel (24 kW model) and 10 l expansion vessel (28 kW and 32 kW models).
  - Remote control (standard equipment) managing all boiler functions.
  - Pre-set for connection to zone management electric board (optional).
  - Integrated flame sensing and modulation electronics including:
    - "chimney sweep" function
    - anti-frost function\*
    - pump anti-blocking function
    - "post-circulation" function
    - "post-ventilation" function
    - "antifast" function
    - Anti-legionella function.
  - Electric insulation rating: IP X5D.
  - Efficiency rating according to 92/42/CEE: ★★★
  - Optional anti-frost kit for external temperatures as low as -15°C.
- \* Anti-frost function: the boiler electronics protect boiler with anti-frost function, against temperatures as low as -5 °C. More severe winter conditions require the installation of the electric resistance anti-frost kit (optional equipment). Electronics anti-frost function protects the boiler only. In order to prevent frost damages to other CH system components, it is advisable to use specific additives for CH systems.

## Technical specifications

Model		Code	Output in kW	Efficiency at max output	Gross weight
LIBRA DUAL BTFS 24 IN	NAT. GAS	CLCxx2BA24	9.5 ÷ 23.8	93.20 %	Kg. 64.6
	LPG	CLCxx3BA24			
LIBRA DUAL BTFS 28 IN	NAT. GAS	CLCxx2BA28	10 ÷ 28.4	93.10 %	Kg. 67.0
	LPG	CLCxx3BA28			
LIBRA DUAL BTFS 32 IN	NAT. GAS	CLCxx2BA32	12.2 ÷ 31.3	93.10 %	Kg. 67.8
	LPG	CLCxx3BA32			
FRAMEWORK		OTELAINC01	ACCESSORY SOLD SEPARATELY		Kg. 31.4

**STANDARD ADDITIONAL EQUIPMENT (included in the price):** remote control, flue gas discharge diaphragm and air sealing tap kit

## Dimensions of frame and coupling centre distances



**STANDARD:**  
choice of vertical or  
horizontal hydraulic  
connections

**E** Electric connection lead  
**G** Gas inlet (1/2")  
**M** CH flow (3/4")  
**C** DHW flow (1/2")

**F** Cold water inlet (1/2")  
**R** CH return (3/4")  
**CR** Remote control lead  
**VS** Safety valve lead

## Accessories

Item	Description	Code
	Split pipe standard kit, including air-intake terminal	<b>OSDOPPIA06</b>
	Air/flue gas initial coaxial pipe Ø 100/60 mm	<b>0ATTCOVE00</b>
	Air/flue gas 90° initial coaxial elbow Ø 100/60 mm with flange	<b>0CURCOFL00</b>
	Vertical connection kit with taps	<b>OKITISTI00</b>
	Horizontal connection kit with taps	<b>OKITISTI01</b>
	External temperature probe	<b>0SONDAES01</b>
	Electric kit (complete with external probe) for management of different CH temperature zones	<b>OKITZONE00</b>
	Electric resistance anti-frost kit	<b>OKANTIGE00</b>

Please see pages 70 - 71 - 72 - 73 for complete accessory list