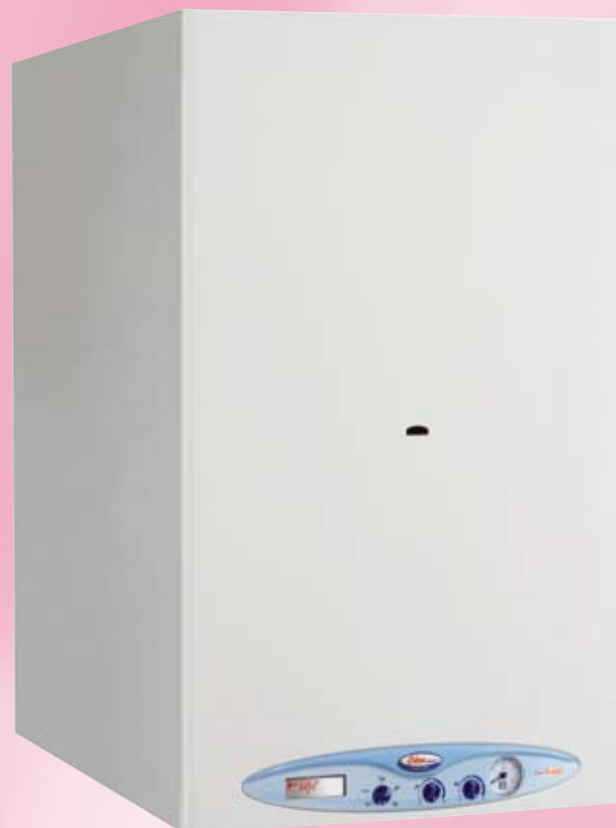


GB

Libra Dual



Wall-hung boilers,
forced draught,
sealed chamber with
storage tank.
For indoor installation.



CE



live
tech



BRAND NAME
NOVA FLORIDA
BOILERS



MADE IN ITALY

C 159 - 01

Wall-hung boilers, forced draught, sealed chamber with storage tank
For indoor installation

Libra Dual



only 450 mm.

only 750 mm.

- Reliability
- Safety
- Easy to use
- Innovation
- High efficiencies
- High production of DHW





LIBRA DUAL LINE TECH BTFS 24 - BTFS 28 - BTFS 32

Nova Florida designed the most exclusive technology for system boilers, “AQUA PREMIUM SYSTEM”; system boilers with “Aqua premium” supply the largest amount of domestic hot water when and how the user wishes.

- Standard preparation for supply with methane or LPG;
- The width of only 450 mm. of this boiler allows it to be used for the replacement of traditional instantaneous boilers that are no longer suitable for the growing needs of domestic hot water;
- State-of-the-art technology, modulation on CH and DHW;
- Production of DHW using “Aqua Premium System”. A system for the production of DHW simultaneously supplied with a secondary plate heat exchanger and a 25-litre stratification storage tank, which can be excluded;
- **High efficiency ratings: ★★★ according to European Directive 92/42/CEE;**
- Front panel door-like opening;
- Standard DHW expansion vessel;
- Ready for connection to remote control;
- Ready for connection to an external probe for “sliding temperature” operation;
- Possibility of high and low temperature central heating area management (optional);
- Nova Florida exclusive design, space-efficient hydraulic assembly;
- Production of domestic hot water: ★★★ according to PrEN 13203.



The reduced dimensions of the stratification storage tank and the compact hydraulic unit make the inside of the boiler rational and easy to access.

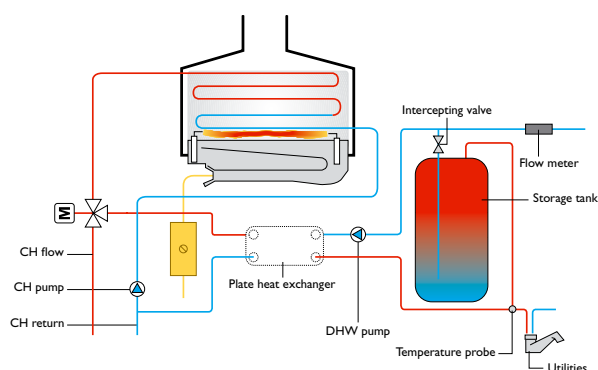


The control panel guarantees user-friendliness and management of the various boiler functions. The **Aqua Premium system** can be enabled or excluded by means of the DHW selector switch (3).

- 1 LCD for reading the temperature of the central heating water and the boiler mode, including any possible anomalies.
- 2 Mode selector switch.
- 3 DHW temperature regulator and storage tank activation knob.
- 4 CH temperature regulator.
- 5 Manometer.



The Aqua Premium system can be activated/deactivated using the DHW selector switch.

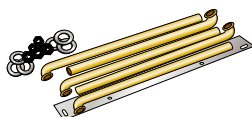


DHW production in 10 minutes

LIBRA DUAL BTFS 24	160 litres/10 mins.
LIBRA DUAL BTFS 28	180 litres/10 mins.
LIBRA DUAL BTFS 32	200 litres/10 mins.

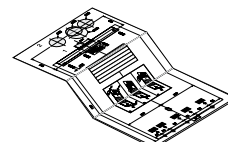
ACCESSORIES SUPPLIED WITH THE BOILER AND INCLUDED IN THE PRICE:

OKITIDBA06



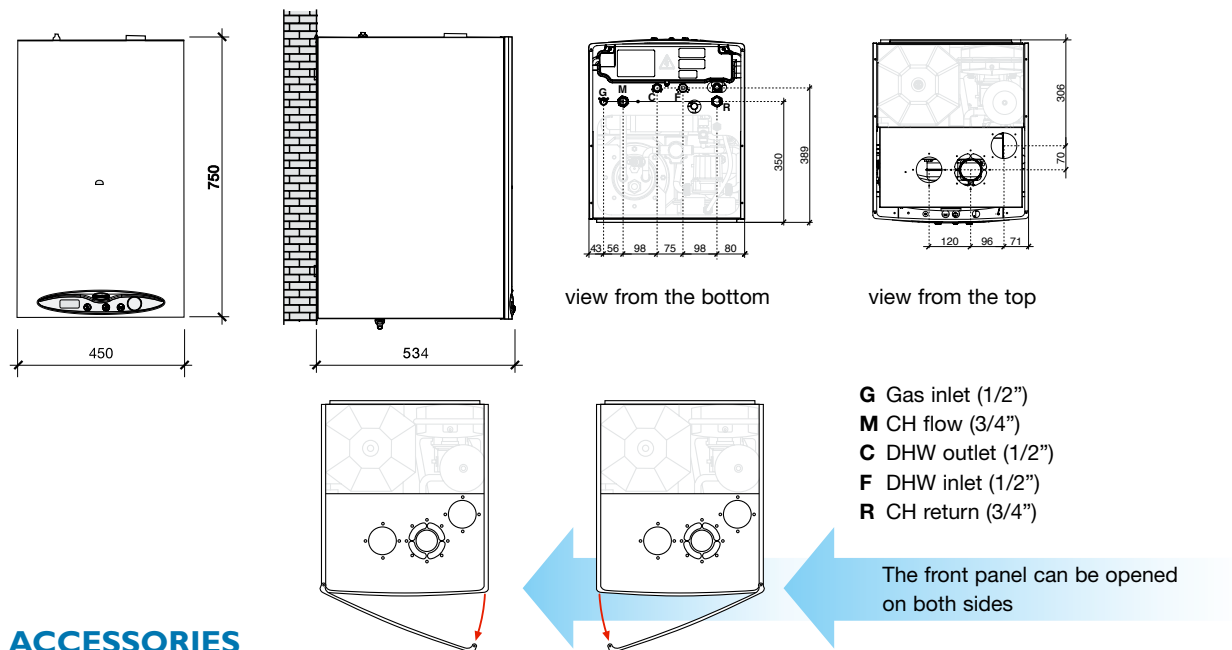
Basic hydraulic kit complete with bicones

ODIMACAR02



Paper fixing template

DIMENSIONS AND CENTER DISTANCES OF CONNECTIONS



ACCESSORIES

Article	Description	Code
	"Standard" split pipe kit complete with air-intake terminal	OSDOPPIA06
	Remote control	OCREMOTO05
	External probe	OSONDAES01
	Electric kit for management of different CH temperature zones	OKITZONE00
	Metal fixing template	ODIMMEC003
	Coated stainless steel flexible hydraulic connection kit N° 2 x 3/4" - N° 3 x 1/2" L: 260/520 mm.	OKITIDTR00
	Pipes and cocks cover	OCOPETUB02

The boiler packaging includes: paper template, fixing bracket, fixing plugs, connection kit, diaphragms, closing cocks, installation manual.

Discover all the advantages it offers



Nova Florida designed the most exclusive technology for system boilers, “**AQUA PREMIUM SYSTEM**”; system boilers with “Aqua premium” supply the largest amount of domestic hot water when and how the user wishes.

The boiler can be programmed to supply the largest amount of domestic hot water when needed, while the water tank can be left inactive in lower need instances so to obtain a surprisingly cost effective operation.

AQUA PREMIUM SYSTEM boilers are more space-efficient when compared to traditional technology system boilers.

Aqua Premium = the largest supply of domestic hot water!



Fondital company operates under **UNI EN ISO 9001:2000** certified quality system management.

Internal quality assessment of functionality, manufacturing processes, and final products ensure reliability and trouble-free operation.



LIBRA DUAL *live*
tech

GENERAL FEATURES

			LIBRA DUAL BTFS 24	LIBRA DUAL BTFS 28	LIBRA DUAL BTFS 32
Category			II2H3+	II2H3+	II2H3+
Max heat input		kW	25.5	30.5	33.6
Reduced heat input		kW	10.6	11.0	13.5
Max heat output		kW	23.8	28.4	31.3
Reduced heat output		kW	9.5	10.0	12.2
Efficiency at max heat output		%	93.20	93.10	93.10
Efficiency at 30% of the load		%	90.20	90.40	90.30
Efficiency at Pmin		%	9.1	90.90	90.00
Efficiency rating according to 92/42/EC			★ ★ ★	★ ★ ★	★ ★ ★
Losses at chimney with burner functioning		%	6.57	6.67	6.67
Losses at chimney with burner off		%	0.1	0.1	0.1
ΔT flue gas/air at Pn		°C	75	75	92
Flue gas mass flow rate (Natural gas)		g/sec	14	18.2	18.9
Content of CO2 (Natural gas)		%	7.2	6.6	6.9
Consumption at max heat output	Natural gas	m³/h	2.7	3.23	3.46
Consumption at max heat output	Butane gas	Kg/h	2.01	2.4	2.62
Consumption at max heat output	Propane gas	Kg/h	1.98	2.37	2.51
Power supply pressure	Natural gas	mbar	20	20	20
Power supply pressure	Butane gas	mbar	29	29	29
Power supply pressure	Propane gas	mbar	37	37	37
Nozzles diameter	Natural gas	mm	1.25	1.35	1.4
Nozzles diameter	Butane gas	mm	0.77	0.8	0.78
Nozzles diameter	Propane gas	mm	0.77	0.8	0.78
Min-max pressure at burner	Natural gas	mbar	2.5 - 13.5	1.3 - 11.5	1.7 - 9.2
Min-max pressure at burner	Butane gas	mbar	4.2 - 27.0	3.5 - 28.5	4.1 - 28.2
Min-max pressure at burner	Propane gas	mbar	5.5 - 35.7	4.5 - 33.0	5.5 - 34.8
Storage tank capacity		l	25	25	25
DHW supply ΔT 30°C EN 625		l/10'	160	180	200
Classification according to prEN 13203			★ ★ ★	★ ★ ★	★ ★ ★
DHW min flow rate		l/min	2	2	3.8
Min DHW pressure		bar	0.3	0.3	0.3
Max DHW pressure		bar	8	8	8
DHW max temperature		°C	57	57	57
DHW min temperature		°C	35	35	35
DHW expansion vessel capacity		l	2	2	2
CH expansion vessel capacity		l	8	10	10
CH min flow rate		l/h	900	1000	1200
Min CH pressure		bar	0.5	0.5	0.5
Max CH pressure		bar	3	3	3
CH max temperature		°C	83	83	83
CH min temperature		°C	35	35	35
Recommended max system capacity		l	160	200	200
System flow/return diameter		inches	3/4"	3/4"	3/4"
DHW inlet/ outlet diameter		inches	1/2"	1/2"	1/2"
Gas connection diameter		inches	1/2"	1/2"	1/2"
Co-axial flue gas/air intake duct diameter		mm	100/60	100/60	100/60
Split flue gas/air intake duct diameter		mm	80 + 80	80 + 80	80 + 80
Power supply voltage / frequency		V/Hz	230/50	230/50	230/50
Total absorbed electric power		W	180	200	230
Fuse on the power supply		A	2	2	2
Control board protection rating		IP	44	44	44
L x H x D		mm	450 x 750 x 534	450 x 750 x 534	450 x 750 x 534
Net weight		Kg	71.6	71.2	87.6

The manufacturer reserves the right to implement modifications without notice.

FONDITAL S.p.A.

25078 VESTONE (Brescia) Italy - Via Mocenigo, 123
 Tel. +39 0365 596.211 - Fax +39 0365 820.200
 e mail: fondital@fondital.it - www.novaflorida.it

COMPANY
 WITH QUALITY SYSTEM
 CERTIFIED BY DNV
 = ISO 9001/2000 =

